

## Testing Procedure:

When the unit is connected to the un-switched live, it must be allowed to charge the battery for at least 24 hours. Conduct the following tests:

- The emergency lamp must illuminate for at least 180 min after disconnection from the mains. If the unit fails to illuminate for the requisite time, remedial action must be taken to repair the situation and once completed, the unit must pass a subsequent test.
- Press and hold Test Button or switch Off Mains Supply, check that the emergency lamp is On. Release the Test Button or Switch On Mains Supply, check that the emergency lamp is Off (Non-maintained operation).

## Trouble Shooting:

Below are a list of common problems and their possible causes.

**Fault: The Green LED Test Switch indicator is not illuminated.**

Check: A.C. is connected and is turned on.  
Battery is connected  
Test Switch for damage.

**Fault: Lamp does not illuminate in emergency mode.**

Check: A.C. is connected.  
Lamp is correctly inserted.  
Battery is connected

**Fault: Lamp illuminates in emergency mode, but only stays on for a short period.**

Check: Battery has been allowed to charge for at least 24 hours.  
Battery for damage.

**Fault: Green LED flashes once every 5 seconds-Battery is disconnected**

Check: Battery is connected

**Fault: Green LED blinks off once every 5 seconds-Charging very flat battery**

Check: Allow 20min to recover battery then re-check

**Fault: Green LED flashes at 2Hz (Fast Flash)-Faulty Battery**

Check: Replace battery



# LED Emergency Bulkite

## Installation & Maintenance Instruction Leaflet



**Victoria (Head Office & Manufacturing)**

Website: [www.clevertronics.com.au](http://www.clevertronics.com.au)

Email: [info@clevertronics.com.au](mailto:info@clevertronics.com.au)

Phone: +61 3 9559 2700

Fax: +61 3 9559 2799

**New South Wales**

Phone: +61 2 8805 6400

Fax: +61 2 8805 6444

**Queensland**

Phone: +61 7 3442 9700

Fax: +61 7 3442 9777

**South Australia/Northern Territory**

Phone: +61 8 8301 8800

Fax: +61 8 8351 8286

**Western Australia**

Phone: +61 8 9207 0000

Fax: +61 8 9207 0088

**New Zealand**

Phone: +64 800 548 448

**UK OFFICE**

Website: [www.clevertronics.co.uk](http://www.clevertronics.co.uk)

362 Stockley Close

West Drayton UB7 9BL

Phone: 01895 430 255



**Models: EBULK**

## Spare Parts:

8050800 HWSUB: CT10754-D2 Bulkhead LED Strip - 2835 EL

8002989 PCA: EL Bulkhead CT10614-L2 6C80

1560160 BATT:EcoLith 3.2V 3.0Ah 170mm lead,NoBKT

## Important:

It is illegal for anyone, except for a licensed electrician to install or maintain this product. Before installation, ensure that the electricity supply has been switched off and isolated. Installation must be carried out in accordance with the relevant Country Standards.

## Caution:

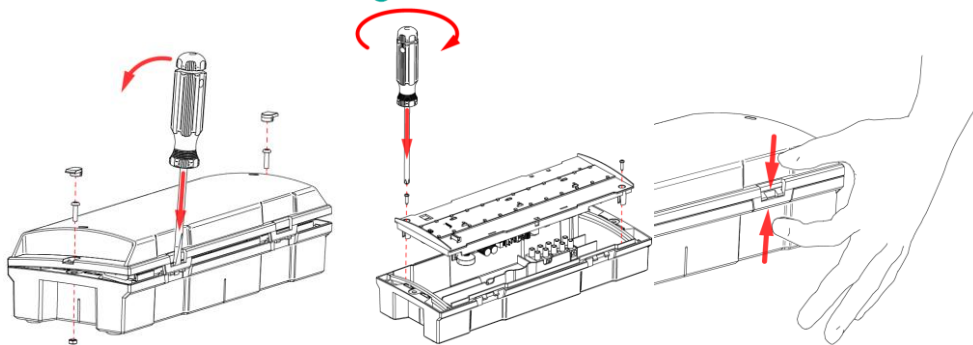
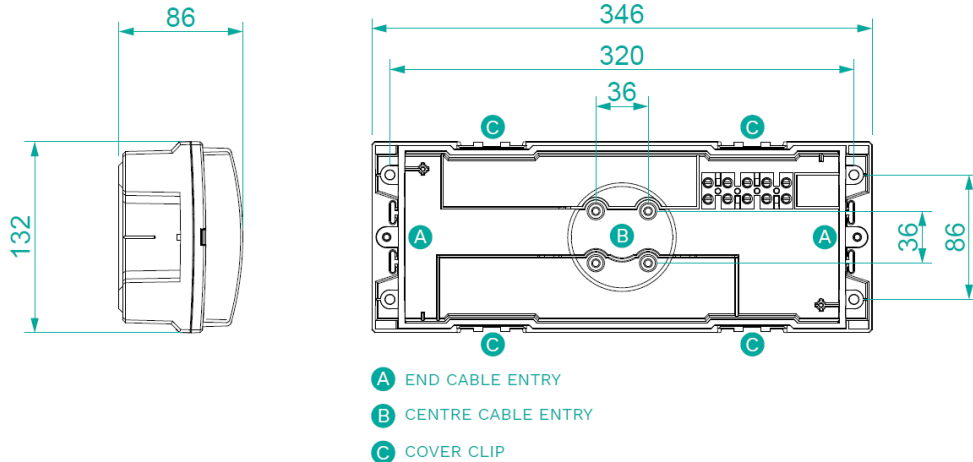
On many building sites, power circuits may be cut off in an uncontrolled and repetitive basis during construction. As a result, any Exit & Emergency Units, on these circuits, will have their batteries discharged or "cycled". The Li-ion battery in the Exit & Emergency Unit has been selected to give excellent long life performance in a controlled IEC 60598-2-22 testing environment. Excessive battery cycling will reduce through-life performance and may lead to premature battery failure. Battery warranty claims, as a result of such abuse, are specifically EXCLUDED from Clevertronics warranty terms.

## Installation:

This EBULK Surface Mount Emergency Luminaire can be installed on solid or T-BAR ceilings/surfaces or used to replace an existing unit.

- Locate the installation position.
- Remove the diffuser by levering the 4 clips holding the diffuser (see Below image on how to do this).
- Remove Geartray by undoing the 2 screws holding it in place (using a suitable screwdriver)
- Pre-drill mounting holes (Image showing it below).
- Mount base plate and use suitable fixings to secure the base plate into the pilot holes (including consideration of maintaining the IP rating)
- Bring in supply cables via the rear entry hole or via the ends of the base you will need to drill a suitable hole where cable entry is required).
- Terminate the supply cables to the unswitched Live, Neutral & Earth Loop terminals.
- Ensure the Battery is connected.
- Push the gear tray back into position and secure in place using the two screws.
- Install the diffuser by pushing it down and squeezing the clips together. Verify that all 4 clips are properly engaged this is ensure the IP seal is (image below)

## Dimensions/Installation:

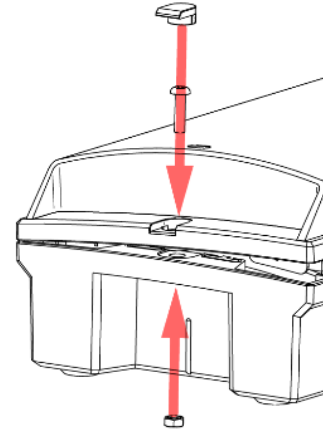


## Non-Maintained/Maintained Mode selection

Press the Test Button 5 times within a 4 second period to toggle operation of the fitting between Maintained and Non-Maintained mode.

## Securing the Diffuser

To secure the diffuser you can add the provided screw and nut. To do this add the nut into the slot provided in the base then use the screw to fix in place.



## Battery Replacement:

1. Prior to any work, isolate the power to the luminaire that requires battery replacement
2. Open the fitting by removing the diffuser, see images in installation instruction.
3. Remove the Geartray. Support gear tray while removing the screws
4. Remove the Battery Connector from the Emergency PCA.
5. Remove the battery from the gear tray by removing mounting screws.
6. Replace battery, re-install screws and connect to Emergency Driver.
7. Refit Gear Tray, and diffuser.

## Warranty:

For Product Warranty information and Terms and Conditions of Sales please refer to our website <http://clevertronics.com.au/terms-conditions-sale-australia-nz/> <https://clevertronics.co.uk/product-warranty-statement/>